



# Dacia Sandero Stepway

The supermini with **SUV style**



January 2020



# Our Trophy Cabinet

## Our most recent award: BBC TopGear.com Awards 2019 Manufacturer of the Year!



We don't like to brag, but we think it's only right to celebrate our hard work. Take a peek at the awards we've had chucked our way (so far)...



And our most recent additions:



# Easy **on the eye**

– easy on the wallet







# A little more about **our range**

Dacia fully supports the introduction of the new emissions testing procedure, called 'Worldwide Harmonised Light Vehicle Test Procedure' (WLTP). WLTP represents a positive change to provide consumers with fuel economy and emissions data which is more representative of the results you may achieve in real life.



# Stand out from the crowd

If you're tired of the same old family cars, then the Sandero Stepway is a breath of fresh air. Whether you're on the school run or the open road, it's not short on style either.

For starters there's the raised ride height. It really puts you in the driving seat with a clearer view of whatever's ahead. Then there are the **16" wheels**, skid plates\*, and black wheelarch extensions and side sill. Everything you need for some rugged SUV style.

Look the business with satin chrome roof bars, stunning metallic colours, a restyled front grill and LED day-time running lights.

Throw in a choice of impressively reliable engines, ABS, **Emergency Brake Assist (EBA)** and **Electronic Stability Control (ESC)**. It's quite the performer.



16" 'Stepway'  
Design Wheels



16" 'Flex Stepway Style'  
alloy-look wheels

\* Rear skid plate not available on SCE75 versions









# Good looking inside and out

Looks will only get you so far. So we made sure the Sandero Stepway's interior punches above its price bracket too. After all, you spend most of your time driving the car, not gazing at it lovingly (although we won't judge if you do.)

Satin chrome air vent, central console and door handle surrounds? Fancy upholstery and **DAB radio** as standard? Air conditioning to make sure you keep your cool? They're all there and ready to roll.

Five proper seats mean there's plenty of room for the whole family too. And they'll all help you stay extra safe, thanks to the reinforced body structure, **front and side airbags**, and **height-adjustable headrests**.









# Tech at your fingertips

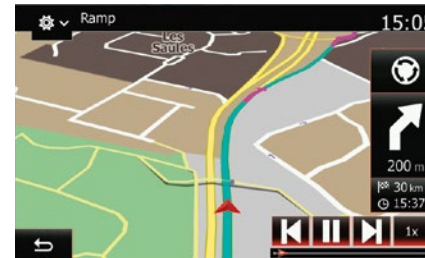
Life's already too complicated for unnecessary fuss. But a few useful and fun gadgets and gizmos can make getting from A to B so much better.

That's why you get **DAB radio** as standard in your Sandero Stepway. And a 12V socket for easy tablet and phone charging. Not to mention USB and Aux inputs to play your favourite music, and Bluetooth®\* to let you make handsfree calls.

Choose the Comfort model with **7" Touchscreen MediaNav** system and you'll also get **SatNav** with voice guidance. That means you'll always know where you're heading. Now that's smarter thinking. As well as your smartphone apps being used on screen via **Apple CarPlay™** or **Android Auto™**\*.

Manoeuvre with ease! Sandero Stepway's **rear parking camera including sensors**<sup>^</sup> alerts you when there is a potential obstacle behind you.

## Navigation



Provided by Navteq with vocal guidance.

## Phone



Bluetooth® technology\* allows you to make and receive calls on the move.

## Rear Camera



Reverse with ease in the Sandero Stepway SE Twenty

## Radio



Listen to DAB, FM or AM radio.

## Music



DAB/FM/AM tuner, connect devices via USB and AUX sockets.

## Apple CarPlay™ and Android Auto™



Connect your smartphone apps to your screen via Apple CarPlay™ or Android Auto™

\* Available on vehicles built from December 2018. Compatibility: An iPhone no earlier than iPhone 5 & iOS 7.1, an Android 5.0 (Lollipop). Connecting a smartphone to access Apple CarPlay™ or Android Auto™ should only be done when the car is safely parked. Drivers should only use the system when it is safe to do so and in compliance with the requirements of The Highway Code. Drivers should be aware of the potential of hands-free technology to distract a driver's attention from the road, preventing them from having full control of the vehicle. ^ Rear Camera standard on Sandero Stepway Techroad and optional on Sandero Stepway Comfort.



# What's your favourite colour?

Take your pick from nine stylish shades.

Solid paint		Essential	Comfort	SE Twenty
369	Glacier white			
Metallic paint				
RPL	Azurite Blue	○	○	○
RQH	Iron Blue	○	○	○
676	Pearl Black	○	○	○
KNA	Slate Grey	○	○	○
CNM	Mink	○	○	-
HNP	Dune	○	○	-
NPI	Fusion Red	○	○	-
KQA	Highland Grey	○	○	○

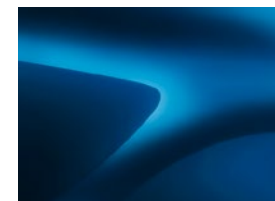
● = Standard ○ = Optional - = Not available

## Solid



Glacier White (369)

## Metallic



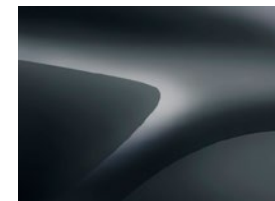
Azurite Blue (RPL)



Iron Blue (RQH)



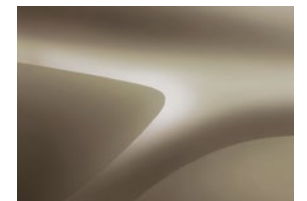
Pearl Black (676)



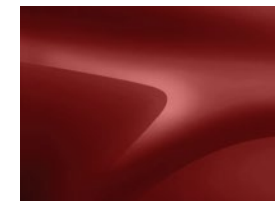
Slate Grey (KNA)



Mink (CNM)



Dune (HNP)



Fusion Red (NPI)



Highland Grey (KQA)



# Which Sandero Stepway suits you?

We're all different, right? And we all deserve a car that fits us like a glove.  
That's why we offer three unique Sandero Stepway trim levels.

## Our core features These come as standard on all trim levels

### Outside

- 16" "Stepway" alloy-look wheels
- Black door handles
- Black side sills
- Black wheelarch extensions
- Body-coloured bumpers (front and rear upper section)
- Fog light surrounds in chrome
- Metal Grey door mirrors
- Raised ride height (+40mm vs Hatchback)
- Roof bars - Metal Grey
- Skid plates - front and rear in satin chrome\*
- "Stepway" logo on front door panel
- Tinted windows

### Inside

- Satin Chrome air vent surrounds
- Satin Chrome central console surround
- Satin Chrome front and rear door handles
- Satin Chrome instrument dial surrounds
- Upholstery - Dark carbon "Stepway" cloth

### Safety

- 3 x 3-point rear seatbelts
- 3 height-adjustable rear headrests
- Anti-lock braking system (ABS) and Emergency Brake Assist (EBA)
- Child locks in rear doors
- Door open - visual warning
- Driver's airbag
- ESC (Electronic Stability Control) with ASR (Traction control) and Hill Start Assist (HSA)
- Front side airbags
- Height-adjustable front seatbelts
- Height-adjustable front headrests
- High-level third rear brake light
- ISOFIX points for child seats in both outer rear seats
- Passenger airbag with deactivation function
- Seatbelt not fastened - visual and audible warning
- Tyre inflation kit
- Tyre Pressure warning light

### Security

- Anti-intruder automatic door-locking system
- Remote central locking
- Thatcham-approved engine immobiliser

### Driving and controls

- ECO mode\*\*
- Gear shift indicator
- Headlights left on - audible and visual warning
- Power-assisted steering
- Rev counter
- Stop and Start

### Visibility and exterior lighting

- 3-speed front windscreen wipers
- Double optic headlights with chrome surrounds
- Front courtesy light
- Front fog lights
- Heated rear window
- LED Daytime running lights (DRL)
- Rear wash/wipe

### Comfort and convenience

- 12v socket
- 4-speed heating and ventilation system
- 60/40 split folding rear seat (seatback only split)





## Want the fundamentals? The Essential is ideal

### in addition to Core features

As well as the core model features, you get air conditioning, AM/FM and DAB radio and Bluetooth™ connectivity.

#### Comfort and convenience

- Boot light
- Door mirrors - manually-adjustable
- Electric front windows (with driver's one-touch)
- Front passenger grabhandle
- Height-adjustable driver's seat
- Height-adjustable steering wheel
- Manual air conditioning
- Manual rear windows
- Map pockets on front seatbacks
- Passenger vanity mirror in sunvisor
- Rear passenger grab handles

#### Communication and connectivity

- AUX input
- Bluetooth® connectivity\*
- DAB/FM/AM radio with fingertip controls and 2 front speakers
- USB connection for MP3 players



## Who doesn't love a little bit of luxury? The Comfort is up your street

### in addition to Essential

Stay in control with your on-board computer, rear parking sensors and cruise control.

#### Inside

- Chrome heating control inserts
- Leather gear knob

#### Driving and controls

- 7-function on-board computer: odometer, trip computer, fuel used, average fuel consumption, fuel range, average speed; next service indicator; outside temperature gauge
- Cruise control and speed limiter
- Rear parking sensors

#### Visibility and exterior lighting

- Door mirrors - heated and electrically-adjustable

#### Comfort and convenience

- Electric rear windows

#### Communication and connectivity

- MediaNav 7" touchscreen multimedia system including:
  - Radio with 2x front and 2x rear speakers
  - Satellite navigation (GB and Northern Ireland mapping)
  - USB and AUX connection points
  - Bluetooth connectivity for handsfree telephone
  - Steering column-mounted fingertip controls
  - Apple CarPlay™ and Android Auto™ compatible\*



## Looking for something special? The SE Twenty is a must have in addition to Comfort

The SE Twenty range gives you the full Sandero Stepway experience and more. Exclusive interior colours with the added convenience of a rear parking camera.

#### Outside

- 16" "Flex Stepway Style" alloy-look wheels
- Shiny black door mirrors
- SE Twenty decal lower trim striping

#### Inside

- New SE Twenty upholstery with blue mesh
- SE Twenty floor mats with SE Twenty styling
- Blue stripe on air-vents

#### Driving and controls

- Rear parking camera (includes sensors)

\* Available on vehicles built from December 2018. Compatibility: An iPhone no earlier than iPhone 5 & iOS 7.1, an Android 5.0 (Lollipop). Connecting a smartphone to access Apple CarPlay™ or Android Auto™ should only be done when the car is safely parked. Drivers should only use the system when it is safe to do so and in compliance with the requirements of The Highway Code. Drivers should be aware of the potential of hands-free technology to distract a driver's attention from the road, preventing them from having full control of the vehicle.

# The engine room

## Reliable performance under the bonnet

Just because your car's affordable, doesn't mean you have to compromise on engine quality. All our engines are rigorously tested, over 800,000 kilometres of test driving in fact. So you can relax every time you turn the key.

## Pick the engine for your lifestyle:

The **SCe75** petrol engine is a great all-rounder.

- 3 cylinder, offers 75hp with CO<sub>2</sub> emissions of 116-119 g/km\*

The turbocharging **TCe** engine offers more performance.

- Produces 90hp from its 3-cylinder, 898cc engine, yet still achieves CO<sub>2</sub> emission 123-125 g/km\*

	Engines	Euro Status	HP	CO <sub>2</sub> g/km NEDC*	CO <sub>2</sub> g/km WLTP*	VED Year †	Combined Fuel Consumption (mpg)*	Benefit in Kind	Insurance Group
<b>Essential</b>	SCe 75	6	75	118	137	£170	45.7	27%	3E
	TCe 90	6	90	121	141	£170	44.3	28%	9E
	TCe 100 Bi-Fuel	6	100	116 (Bi-Fuel 104)	136 (Bi-Fuel 123)	£160	47.1 (Bi-Fuel 37.6)	28%	9E
<b>Comfort</b>	TCe 90	6	90	121	141	£170	44.3	28%	9E
	TCe 100 Bi-Fuel	6	100	116 (Bi-Fuel 104)	137 (Bi-Fuel 123)	£160	46.3 (Bi-Fuel 37.1)	28%	9E
<b>SE Twenty</b>	TCe 90	6	90	121	141	£170	44.3	28%	9E
	TCe 100 Bi-Fuel	6	100	116 (Bi-Fuel 104)	137 (Bi-Fuel 123)	£160	46.3 (Bi-Fuel 37.1)	28%	9E

Options	Essential	Comfort	SE Twenty
Metallic paint	○	○	○
Armrest	-	○	○
Western European mapping upgrade	-	○	○
Aspira leather upholstery <sup>°</sup>	-	○	-
Rear parking camera	-	○	●
Emergency spare wheel (excluding Bi-Fuel versions)	○	○	○

● = Standard ○ = Optional - = Not available

<sup>°</sup>Genuine leather on central section; synthetic leather on side bolsters and rear

\*WLTP figures shown are for comparability purposes; only compare figures with vehicles tested to the same technical procedures. Actual real world driving results may vary depending on factors such as weather conditions, driving styles, vehicle load or any accessories fitted after registration. WLTP is a new test used for fuel consumption and CO<sub>2</sub> figures however until April 2020 the CO<sub>2</sub> figures are based on the outgoing (NEDC) test cycle which will be used to calculate vehicle tax on first registration. Please visit [dacia.co.uk/configure](http://dacia.co.uk/configure) for WLTP figures for any selected options.

† Vehicle Excise Duty: first 12 months.



# We've got you covered

You might think our shockingly affordable prices mean our cars aren't made to last. Actually, the Dacia range is one tough cookie. To prove it, you get a 3-year\* warranty (or 60,000 miles, if you reach that first). This means we'll repair or replace any defective parts for free. To keep the good times rolling, you can extend your warranty up to 7 years for a great price. We also give you a 2-year paintwork and 6-year anti-corrosion warranty, so you can kick back knowing that your Dacia will stay looking good-as-new for years to come.

## Roadside assistance

Although our cars are built for plain sailing, you can rely on us if you have a breakdown – 24/7 365, wherever you are in the UK or Northern Ireland. This offer also stands for the first 3 years/60,000 miles<sup>A</sup> after you buy your new Dacia.

## Dacia car insurance<sup>1</sup>

Dacia Insurance has been specifically created to provide superb protection for you and your car. Unlike most other UK insurers, in the event of an accident, your Dacia will be repaired at a Dacia Approved Bodyshop using only Dacia approved parts and approved repair methods. This maintains your Dacia's safety rating, protects its resale value and helps to maintain its Dacia warranty<sup>A</sup>. Dacia Insurance also offers a courtesy car for the duration of a repair at a Dacia Approved Bodyshop.

**Dacia car insurance: 0330 102 7795 [www.daciacarinsurance.co.uk](http://www.daciacarinsurance.co.uk)**

Lines are open Mon - Thurs 8.30am - 7pm, Fri 9am - 6pm, Sat 9am - 5pm

## Servicing

Dacia Service Plans are the ultimate hassle free way to take care of your vehicle. Depending on the Service plan you purchase (see opposite grid) your servicing needs are covered and you benefit from;

- Inflation Proof Servicing – You know exactly what you'll pay and there are no hidden costs
- Peace of Mind – No matter where life takes you, we'll be there in over 5000 workshops across Europe
- Dacia Expertise & Quality – Our highly trained technicians know your Dacia inside out

The Dacia Service Plan contains Dacia services in-line with the manufacturer's service schedule, plus comes with a complimentary vehicle health check to ensure your Dacia is in the best condition possible.

	Cash Price	Monthly payments with Dacia Finance**		Total Retail Price
<b>Service plan<sup>A</sup></b>			<b>Extended warranty</b>	
3 years / 30,000 miles Service Plan	£350	£9 per month	4 years / 60,000 miles <sup>†</sup>	£195
4 years / 40,000 miles Service Plan	£650	£12 per month	5 years / 60,000 miles <sup>†</sup>	£350
			6 years / 80,000 miles <sup>†</sup>	£595
<b>Servicing<sup>A</sup> + Extended Warranty Plan</b>			7 years / 100,000 miles <sup>†</sup>	£795
4 years / 60,000 miles	£950	£18 per month		

Dacia Extended warranty ends when you reach the age or mileage limit (whichever comes first). For full Warranty Terms and Conditions visit [www.dacia.co.uk/services-and-finance/warranty](http://www.dacia.co.uk/services-and-finance/warranty).

## Service Intervals<sup>‡</sup>

Annual servicing **OR** servicing at 18,000 miles (whichever comes first)

Service Schedule <sup>‡</sup>	Year 1	Year 2	Year 3	Year 4	Year 5	Year 6
	Cabin filter change	Oil change + Cabin filter change	Cabin filter change + Brake fluid change	Oil change + Cabin filter change + Brake fluid change	Cabin filter change + Coolant 150km change	Cabin filter change + Belts 150km change

\*Dacia warranty ends when you reach the age or mileage limit (whichever comes first). Subject to status, terms and conditions apply. The monthly service plan offer is available at point of signing agreement for vehicle purchased under HP and PCP finance agreement provided by Dacia Finance Ltd. (Not available on cash purchases). For full Dacia Warranty Terms and Conditions visit [www.dacia.co.uk/services-and-finance/warranty/](http://www.dacia.co.uk/services-and-finance/warranty/).

<sup>A</sup> Standards Manufacturer term and mileage

<sup>†</sup> Dacia Extended warranties are available to purchase from first date of registration up to end of manufacturer warranty.

<sup>‡</sup> The Service plan offer is available for eligible retail vehicles only and valid at participating dealers only. Vehicles must be ordered between 18 December 2019 and 31 March 2020 and registered by 30 June 2020. The Dacia Service plan covers the manufacturer's minimum maintenance programme requirements for the term of the Service plan purchased (refer to the Warranty and Service sheet in the Handover Document wallet for details). The plan ends when you reach the age or mileage limit (whichever comes first). Services must be carried out in line with the manufacturer's minimum maintenance programme requirements and servicing intervals within +/- 1 month or 1,000 miles of the service interval and can only be carried out at a Dacia Approved outlet. Service plans do not cover wear and tear items such as (but not limited to) tyres, wiper blades or brakes. For Service plan full Terms & Conditions visit [www.dacia.co.uk/services-and-finance/service-plan](http://www.dacia.co.uk/services-and-finance/service-plan). Cannot be part exchanged, refunded or transferred.

<sup>‡</sup> The service schedule and intervals are subject to the registration number. Ask your local dealer to confirm your service schedule / intervals as the above is a guideline.

\*\*36 or 48 monthly payments options are only available at point of signing a finance agreement provided by Dacia Finance, Rivers Office Park, Denham Way, Rickmansworth, WD3 9YS. Guarantees and indemnities may be required. You must be a UK resident (excluding the Channel Islands) and over 18 to apply for finance. Terms and conditions apply.

<sup>1</sup> Dacia Insurance is arranged and administered by Verex Insurance Services Ltd, which is registered in England and Wales No. 05686831 at Batchworth House, Church Street, Rickmansworth, Herts, WD3 1JE and authorised and regulated by the Financial Conduct Authority, No. 487185. Verex Insurance Services Ltd arranges policies from a panel of insurers, details are available on request.

<sup>A</sup> If your insurer uses non-approved parts which subsequently fail, they may not be covered under your manufacturer's warranty.

# Bi-Fuel (Liquefied Petroleum Gas - LPG)

The new dual-fuel factory fitted Bi-Fuel engine has excellent range capacity and comes with 47.1 (Bi-Fuel 37.6) mpg and 116 (Bi-Fuel 104) g/km CO<sub>2</sub> emissions\*.

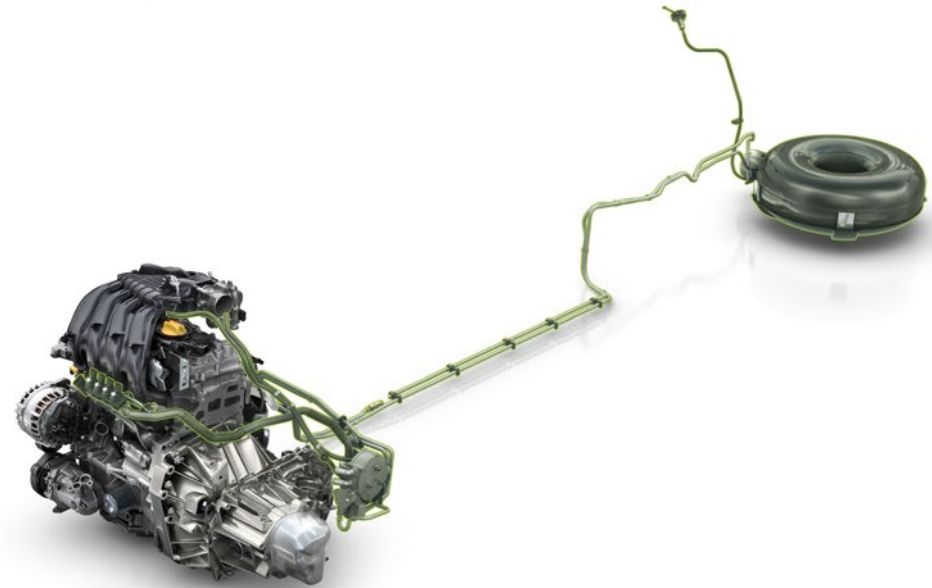
## Bi-Fuel (LPG) Engines

Bi-Fuel is an alternative fuel enabling a lower CO<sub>2</sub> emission. Bi-Fuel vehicles have two separate fuel tanks (LPG and Petrol) and can be switched between fuel type. The LPG tank (32 litres) is installed in the hollow of the spare wheel, and does not sacrifice the boot volume. Bi-Fuel vehicles come with a tyre inflation kit as it is not possible to have spare wheel.



## The key benefits of Bi-Fuel engines are:

- Better in Running Fuel Costs<sup>‡</sup>
- Better in CO<sub>2</sub> Emissions<sup>‡</sup>
- Better in NoX Emissions<sup>‡</sup>
- Better in Polluting Particles<sup>‡</sup>
- Quieter Engine Noise<sup>‡</sup>



\*WLTP figures shown are for comparability purposes; only compare figures with vehicles tested to the same technical procedures. Actual real world driving results may vary depending on factors such as weather conditions, driving styles, vehicle load or any accessories fitted after registration. WLTP is a new test used for fuel consumption and CO<sub>2</sub> figures however until April 2020 the CO<sub>2</sub> figures are based on the outgoing (NEDC) test cycle which will be used to calculate vehicle tax on first registration. Please visit [dacia.co.uk/configure](https://www.dacia.co.uk/configure) for WLTP figures for any selected options.

‡ In comparison with a TCe petrol version † In comparison with a Blue dCi version



## Bi-Fuel



### Maintenance

- Similar maintenance programme as petrol versions

### Range and Economy

- Bi-Fuel engines come with two fuel tanks (Petrol & LPG) which means you can travel around 620 miles with both tanks full.
- When running in LPG mode, fuel consumption reduces by around 20%. However, as LPG is cheaper to buy at the fuel pump, there are savings to be had.

### Easy to use

- Filling up with LPG is just as easy as filling up with Petrol or Diesel. Simply screw on the UK LPG adaptor found in the vehicle and attach the LPG fuelling nozzle at your chosen station.

### Warranty

- The cherry on the cake? Have total peace of mind with Dacia's standard 3 year/60,000 mile warranty\*.

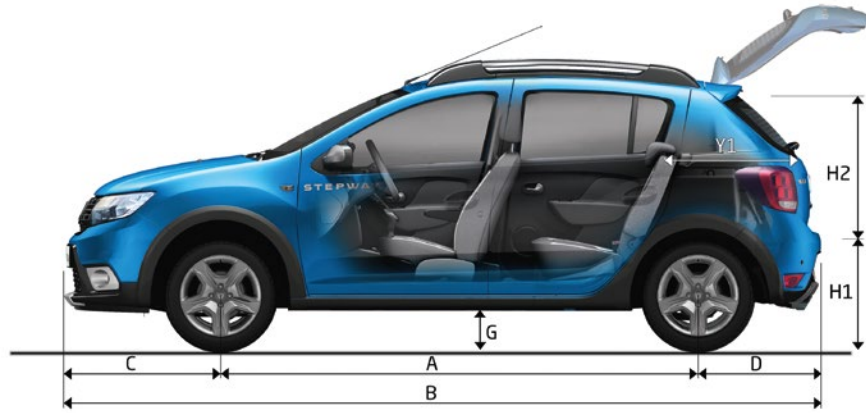
## The finer detail

	SCe 75	TCe 90	TCe 100 Bi-Fuel	
<b>Engine</b>	Engine type	BR10 MT	H4B 408	H4D 408
	Type Mine	5SDMC5	7SDL1C	7SDL1C
	Cubic capacity (cm <sup>3</sup> )	998	898	998
	Number of cylinders/valves	3 in line / 12	3 in line / 12	3 in line / 12
	Fuel	Unleaded petrol	Unleaded petrol	Unleaded petrol
	Fuel injection type	Multipoint sequential	Multipoint sequential	Multipoint sequential
	Aspiration	Naturally-aspirated	Turbocharged	Turbocharged
	Particulate filter (PF)	-	-	-
	Bore x Stroke (mm)	71 x 84	72.2 x 73.1	72.2 x 73.1
	Compression ratio	11	9.5	9.5
	Peak power KW (HP) @ RPM	54 (75) @ 6,300	66 (90) @ 5,000	75 (100) @ 5,500
	Peak torque (Nm) @ RPM	95 @ 3,500	140 @ 2,250	160/170 @ 2,000
	Stop and Start	No	Yes	Yes
	<b>Performance</b>	Maximum Speed mph (km/h)	97 (156)	104 (168)
0- 62 mph - secs (0-100 km/h)		16.7	11.1	TBC
0 - 400m (secs)		20.4	17.5	TBC
0 - 1000m (secs)		37.0	33.1	TBC
<b>Fuel consumption* and emissions</b>	CO <sub>2</sub> (g/km) NEDC	118	121	116 (Bi-Fuel 104)
	CO <sub>2</sub> (g/km) WLTP	137	141	136-137 (Bi-Fuel 123)
	Combined cycle - l/100km	6.2	6.4	7.5-7.6 (Bi-Fuel 6.0-6.1)
	Combined cycle - mpg	45.7	44.3	46.3-47.1 (Bi-Fuel 37.1-37.6)
	Drive type	Front-wheel drive	Front-wheel drive	Front-wheel drive
<b>Gearbox</b>	Gearbox type/index	JHQ/372	JHQ 336/351/399	JHQ 336/351/399
	Number of forward gears	5	5	5
	Steering type	Power-assisted (Hydraulic)	Power-assisted (Hydraulic)	Power-assisted (Hydraulic)
<b>Steering</b>	Turning circle between pavements / walls (m)	10.5	10.5	10.5
	Number of turns (lock-to-lock)	3.3	3.3	3.3
	Front suspension type	Pseudo McPherson with triangular arm		
<b>Suspension</b>	Rear suspension type	Flexible angle with programmed deflection and coil springs		
	Wheel size	6J15 / 6J16	6J15 / 6J16	6J15 / 6J16
<b>Wheels/tyres</b>	Tyre specification	185/65 R16	185/65 R16	205/55 R16
	Front: Discs - diameter (mm) / thickness (mm)	258 / 22	258 / 22	258 / 22
<b>Braking</b>	Rear: Diameter (inches)	8	8	8
	Anti-lock Braking System (ABS)	Standard	Standard	Standard
	Electronic Brakeforce Distribution (EBD)	Standard	Standard	Standard
	Emergency Brake Assist (EBA)	Standard	Standard	Standard
	ESC (Electronic Stability Control)	Standard	Standard	Standard
	Fuel tank capacity	50	50	50
<b>Fuel tank capacity</b>	AdBlue® tank size	-	-	-
	Kerb Weight (Excluding Driver) (kg)	1,010	1,040	1,092
<b>Weight</b>	Gross vehicle weight (kg)	1,505	1,538	1,580
	Gross train weight (kg)	2,295	2,328	2,370
	Max payload (kg)	495	498	488
<b>Towing capacity</b>	Max braked trailer (within gross train weight limit) (kg)	790	790	790
	Max unbraked trailer (kg)	540	555	580

\* WLTP figures shown are for comparability purposes; only compare figures with vehicles tested to the same technical procedures. Actual real world driving results may vary depending on factors such as weather conditions, driving styles, vehicle load or any accessories fitted after registration. WLTP is a new test used for fuel consumption and CO<sub>2</sub> figures however until April 2020 the CO<sub>2</sub> figures are based on the outgoing (NEDC) test cycle which will be used to calculate vehicle tax on first registration. Please visit [dacia.co.uk/configure](https://www.dacia.co.uk/configure) for WLTP figures for any selected options.



## Dimensions



### Exterior dimensions (mm)

A - Wheelbase	2,589
B - Overall bodywork length	4,089
C - Front overhang	846
D - Rear overhang	654
E - Front track	1,489
F - Rear track	1,492
G - Ground clearance	173
H - Unladen height / with roof bars	1,555 / 1,615
H1 - Unladen sill height	793
H2 - Rear tailgate height	622
Unladen height with hatchback open	2,035
L1 - Overall width without door mirrors	1,761
L2 - Overall width with door mirrors	1,994
Y1 - Loading length, rear seat in place	756
Height beneath parcel shelf	469

### Boot volume

Maximum boot capacity with rear seats in place (litres)	320
Maximum load capacity with rear seats folded down (litres)	1200

# The finishing touches\*

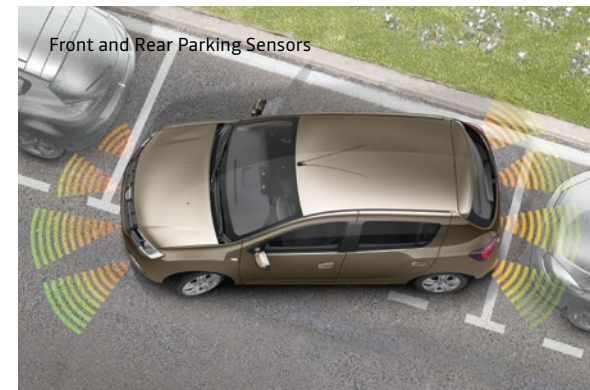
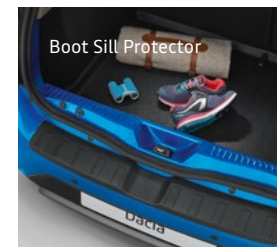
Make your adventures easier with our accessory packs.

You can get all of our accessories, and these packs, for any Sandero Stepway model.



## Protection pack +

Keep your Sandero Stepway looking good as new. Parking sensors, a boot sill protector and an alarm. They'll all protect against wear and tear on the road and in the car park.



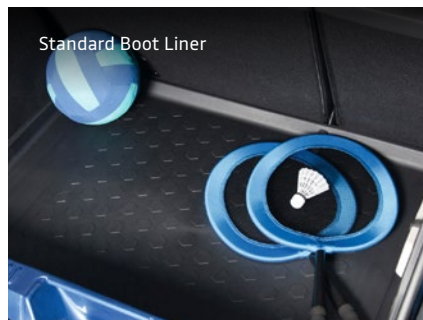


## Touring pack

From transporting bikes and surf boards to keeping your shopping intact, our roof bars, luggage net and tow bar are more than up to the job.



## Others



### Individual Accessories†

- Standard Mats
- Premium Mats
- Rubber Mats
- Standard Boot Liner
- All-in-one Boot Liner
- Boot Organiser

- Roof Bars
- Roof Box (400L)
- Armrest
- Front Parking Sensors
- Rear Parking Sensors
- Removable Tow Bar (Without Tools)
- Boot Sill Protector

### Accessory Packs

- Dacia Essentials Pack - Premium Mats, Front Mud Flaps, Rear Mud Flaps, Boot Liner
- Protection Pack + - Includes front and rear parking sensors, alarm, boot sill protector / Also exists for Comfort, without rear parking sensors
- Touring Pack - Removable tow bar (without tools), roof bars, vertical net
- Delivery Pack - Premium mats, Safety kit
- Comfort Pack - armrest, boot net, roof bars

†Accessories are fitted post-production, and may have an impact on real world fuel (actual) consumption and CO2 figures.

# The Dacia Community

For us, going the extra mile doesn't stop at making great value cars. We take great pride in playing an active part in the community and giving back to communities throughout the UK. We support the life-saving work of the Nationwide Association of Blood Bikes. We proudly support Future Terrain, a charity that helps injured ex-service personnel back into employment through motorsport and vehicle engineering. We get stuck in as the official partner of Rugby League. Now the proud sponsors of the Nation England Rugby League teams for Men, Women, Wheelchair and Youth. We also run Dacia Days, which are full of fun and games for our amazing Dacia drivers - keep up to date with us on Facebook, Twitter, Instagram and our YouTube channel.





# The Dacia way

Sixteen years isn't long. But in that time we've grown from unknown to international warriors. We've sold 5.8 million Dacias globally since 2004. And since we launched in the UK in 2013, 150,000 smart folk have bought themselves Dacias.

It takes something different to make an impact like that. And we've got different by the shed-load.

See, we think practicality should always come first. No silly frills, just exactly the kit and quality you need. So that's what our simple range of smart, reliable cars give you. Our prices are always clear and remain shockingly affordable.

Maybe that's why we've been one of the **fastest growing car brands** in Europe since 2004. Or maybe it's the awards we keep winning like our most recent award 2019 Good Housekeeping Reader Recommended award. Don't just take our word for it – check out our trophy cabinet and our genuine customer reviews on **Dacia.co.uk**.

Did you know we're part of the **Renault Nissan Mitsubishi Alliance**, and share our head office with Renault? That means we also share Renault's **nationwide dealer network**. So if you want to pop in for a look, chat or test drive, chances are we're pretty close by.

**Drop in;** it's easy to find your local dealer at **dacia.co.uk/find-a-dealer**.

# Take your **first adventure**

Make a smart choice today.

Book a test drive at [Dacia.co.uk](https://www.dacia.co.uk)  
Or give us a ring on **0344 335 1111**  
Buy Online at [buy.dacia.co.uk](https://buy.dacia.co.uk)

**DACIA**  
[www.dacia.co.uk](https://www.dacia.co.uk)

\*Dacia warranty ends when you reach the age or mileage limit (whichever comes first). Subject to status, terms and conditions apply.

Although every effort has been made to ensure that the information contained within this brochure is as accurate and up to date as possible, Dacia UK reserves the right to modify its models without notice, including their characteristics, specifications, equipment and accessories. Brochures inevitably become out of date or inaccurate in some respects, in that such characteristics, specifications, equipment, or accessories may be changed after the publication date given below and can differ from the descriptions given or the photos displayed. It is therefore necessary to check with your Dacia Dealer before purchasing any product that the characteristics, specifications, equipment or accessories of the vehicle on order are as advertised.

PART NUMBER 7701 380 796 - JANUARY 2020

Dacia UK Customer Relations, The Rivers Office Park, Denham Way, Maple Cross, Rickmansworth, Hertfordshire, WD3 9YS - Tel: 0344 3351111



**3 year**  
**or 60,000 miles**  
**standard warranty\***